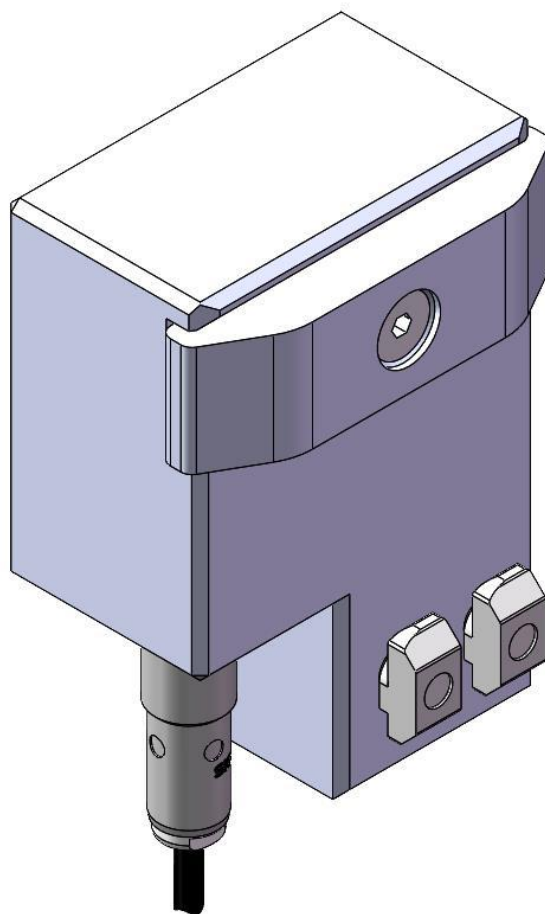


RS1/PI Rocker

Instruction & Maintenance Manual

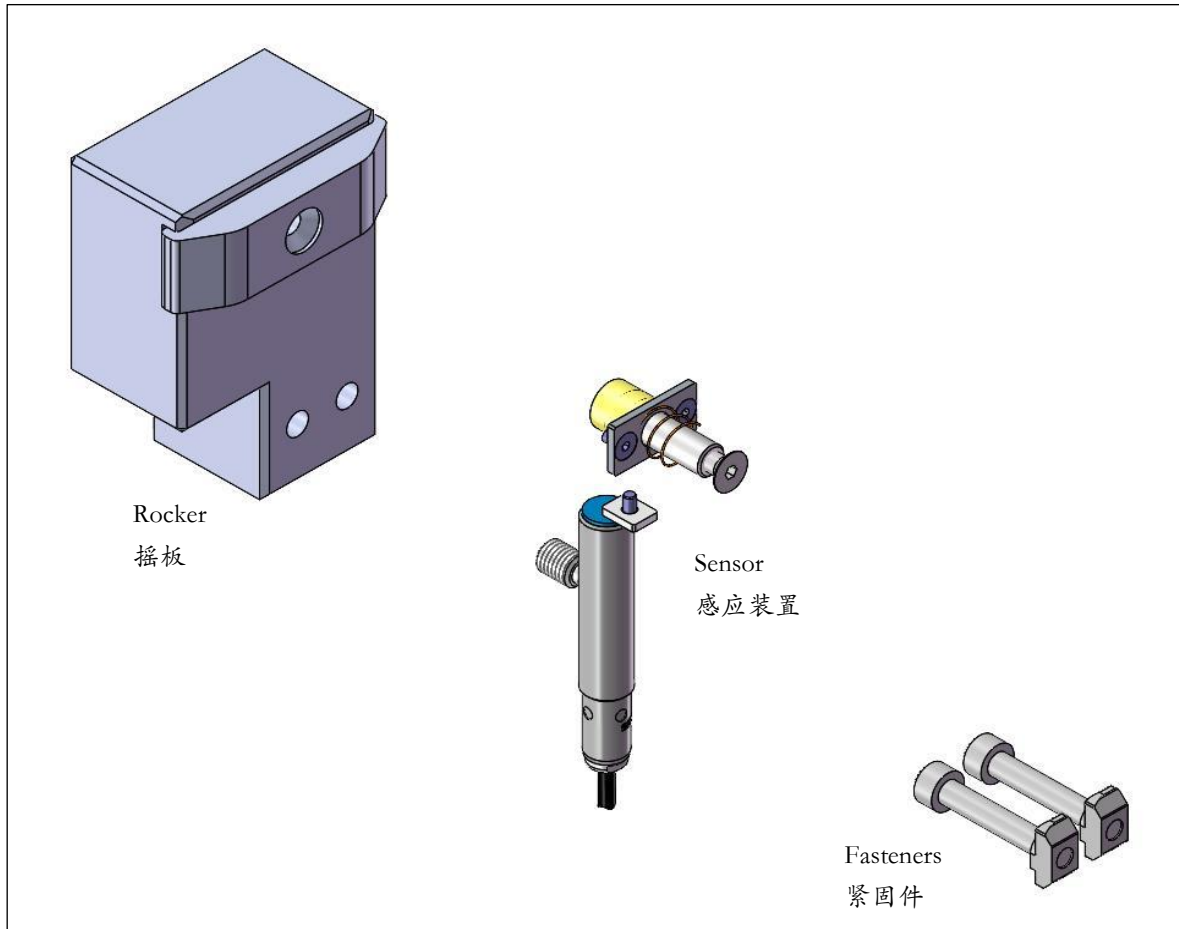
RS1/PI 摇摆安装使用维护手册



Suzhou LinkedGo Transfer System Co.,Ltd.

苏州领科工业技术有限公司

Structure Diagram 结构示意图



产品特征

安装步骤

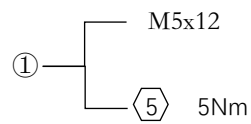
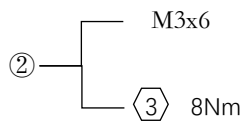
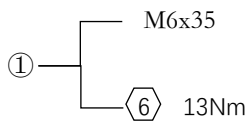
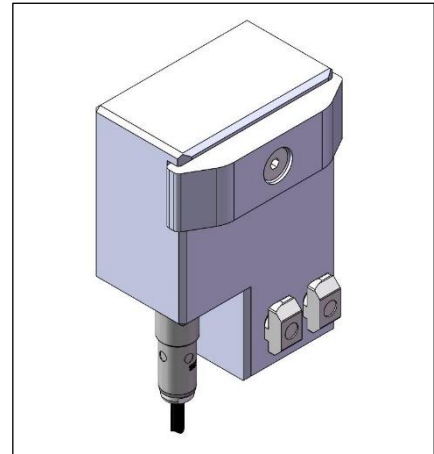
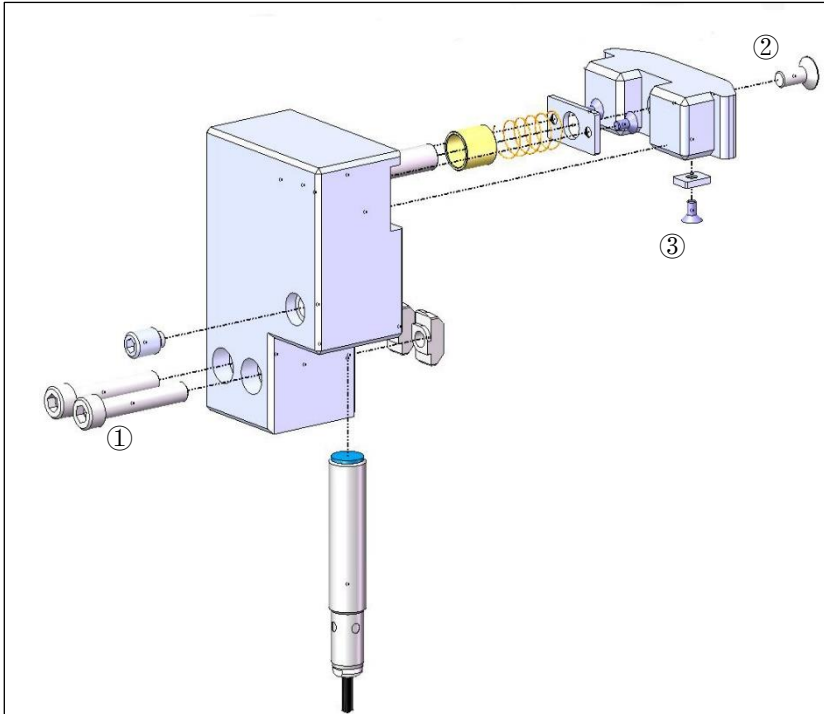
1. The switch bracket can fix the position of the workpiece tray, and the side sensing application sensor M12x1.
- 1、摇板用于输送段区域监控，识别工件托盘。
2. The structure is simple and compact.
- 2、结构简单、紧凑。
3. Installed on the profile of the conveying section.
- 3、安装在输送段型材上。

维护保养

安装步骤 Installation steps

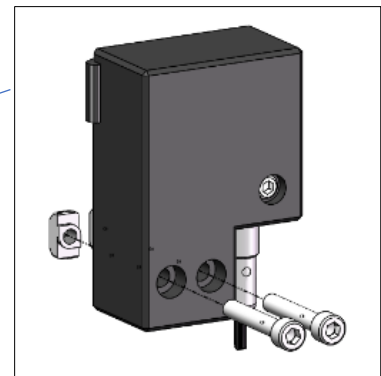
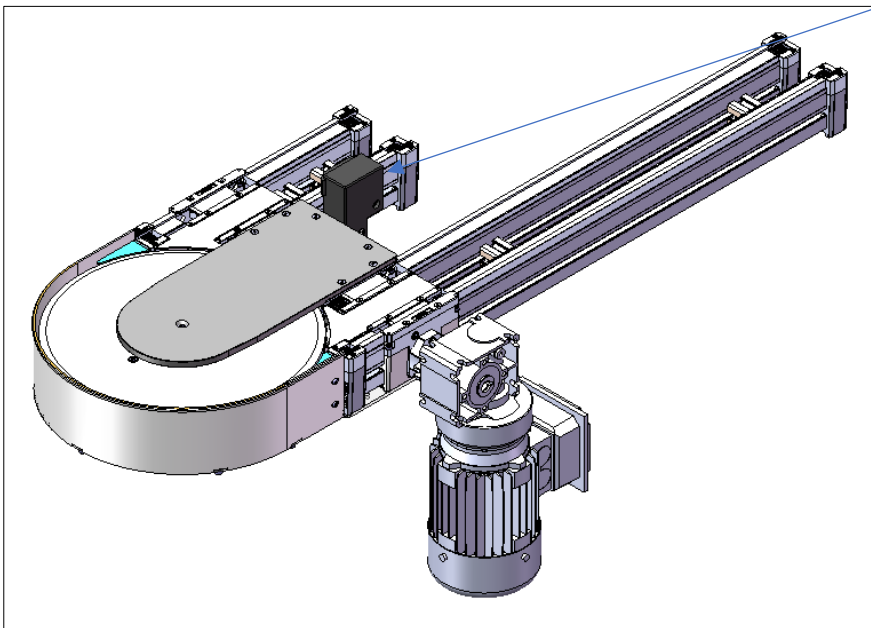
A Assembly of RS1 PI shaking plate.

A 组装 RS1 PI 摇板。



C Install to the wire body.

C 安装至线体。



产品特征

安装步骤

维护保养

Disclaimer

免责声明

The customer shall inspect the equipment regularly. If the customer fails to maintain the conveyor as the state above, leading to any malfunction or damage to the conveyor, our company will not be responsible for it, all related costs (including material costs, installation and commissioning fees, and hotel expense) shall be borne by the customer.

客户应定期对设备进行检查。若客户未按要求对输送机进行维护，进而导致输送机发生任何故障或损坏，我司将不承担相关责任，由此产生的相关费用（材料费，安装调试费，差旅费）均由客户承担。

Suzhou LinkedGo Transfer System Co.,Ltd.
苏州领科工业技术有限公司

[Tel: +86-512-6636 1885](tel:+86-512-66361885)

Add: Room 706, Building D, Dongchuang Science and Technology Park, No.
216 Jinfeng Road, Wuzhong District, Suzhou, P.R. China

Zip code:215101

E-mail: Sales@LinkedGo.com.cn

Website: [www. LinkedGo.com.cn](http://www.LinkedList.com.cn)

Subject to technical modifications

电话: +86-512-6636 1885

地址: 苏州市吴中区木渎镇金枫路 216 号东创科技园 D 幢 706 室

邮编: 215101

邮箱: Sales@LinkedGo.com.cn

网址: www.LinkedList.com.cn

我司保留技术更改的权利